

Meridian Business Center

16101-16251 Parallel Dr
Fort Myers, FL 33913



CUSHMAN &
WAKEFIELD

COMMERCIAL
PROPERTY
SOUTHWEST FLORIDA



Building B - For Lease

Property Highlights

- Class A industrial campus located in Fort Myers, just off Alico Road and I-75
- New construction
- Fully sprinklered
- Clear height varies from 18' to 20'
- Bay spacing varies from 20' x 53' to 30' x 53'
- Many uses permitted

STRAP NUMBER(S)

02-46-25-03-00000.0C70

PROPERTY TYPE

Industrial Warehouse

BUILDING AREA

± 74,893 SF

ZONING

MPD

LEASE RATE

\$12.00 - \$14.50 NNN

FRONTAGE

±1,953' on Ben Hill Griffin Pkwy

SUBMARKET

S. Fort Myers/San Carlos

GARY TASMAN
CEO / Principal Broker
(239) 489-3600
gtasman@cpswfl.com

SHAWN STONEBURNER
Senior Director
(239) 489-3600
sstoneburner@cpswfl.com

Better never settles

Meridian Business Center

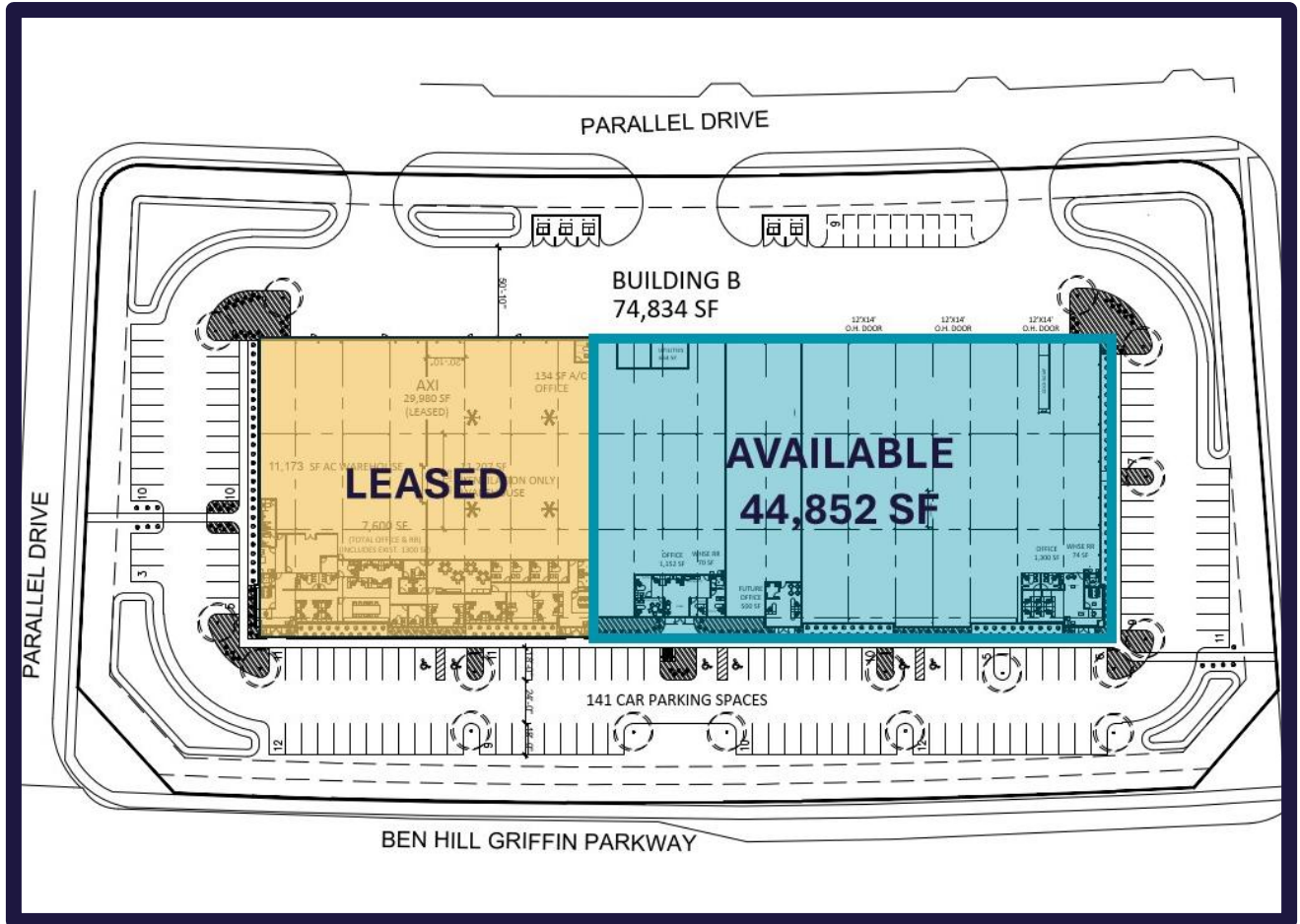
16101-16251 Parallel Dr
Fort Myers, FL 33913



CUSHMAN &
WAKEFIELD

COMMERCIAL
PROPERTY
SOUTHWEST FLORIDA

Building B SITE PLANS



Unit Size	Lease Rate	CAM	Monthly Rent*
44,852 SF	\$12.00 NNN	\$3.25	\$56,999.42

*Taxes Not Included

- Space may be demised 10,000 SF at \$14.50 NNN
- 5 - 12' x 14' drive-in doors
- Fully sprinkled
- Space is set up for interior dock ramp accessibility

Better never settles

GARY TASMAN
CEO / Principal Broker
(239) 489-3600
gtasman@cpswfl.com

SHAWN STONEBURNER
Senior Director
(239) 489-3600
sstoneburner@cpswfl.com

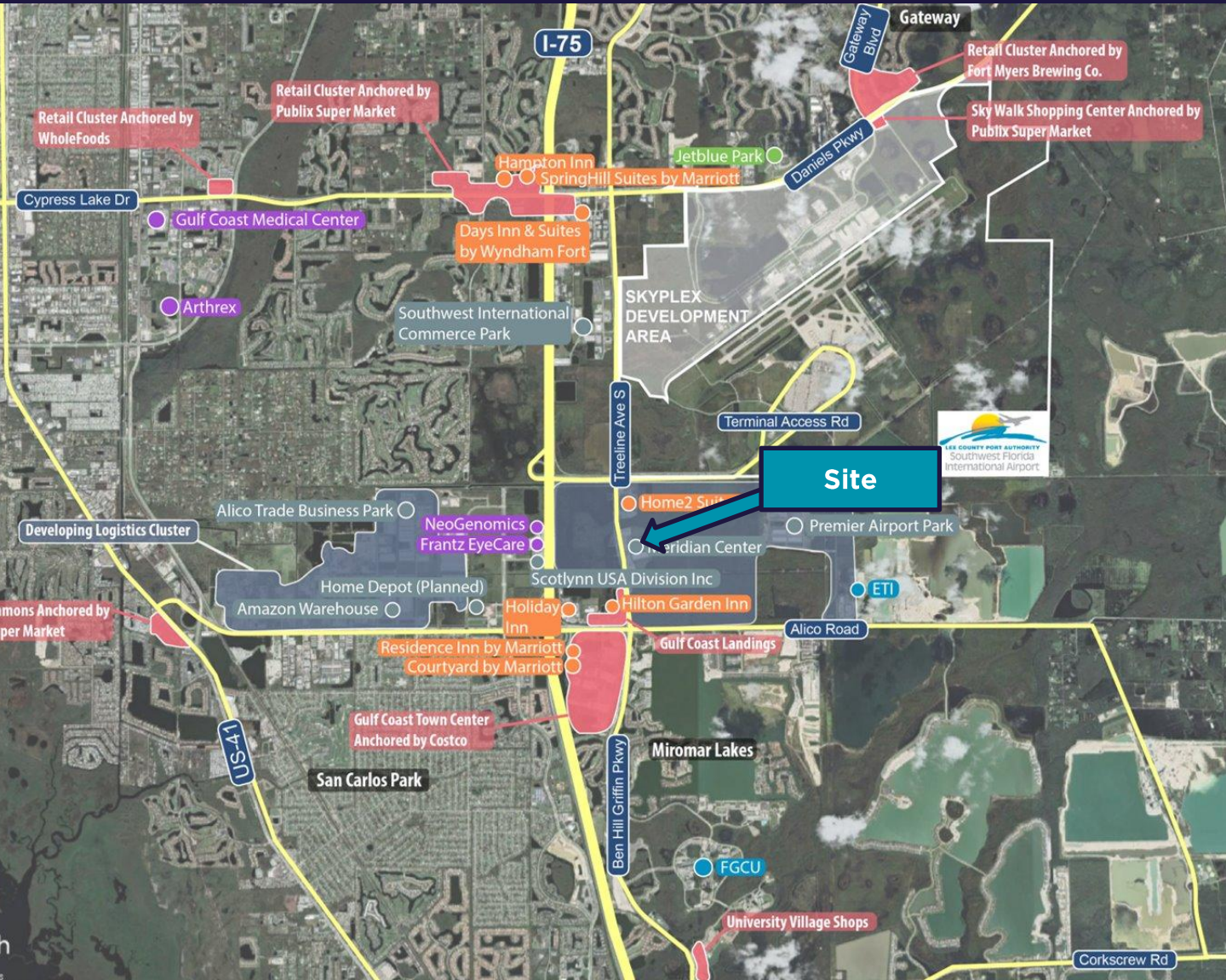
Meridian Business Center

16101-16251 Parallel Dr
Fort Myers, FL 33913



CUSHMAN & WAKEFIELD

COMMERCIAL
PROPERTY
SOUTHWEST FLORIDA



- Retail Cluster
- Leisure
- Hotel
- Healthcare/Biotech

- Logistics
- Developing Logistics Cluster
- Education

Better never settles

GARY TASMAN
CEO / Principal Broker
(239) 489-3600
gtasman@cpswfl.com

SHAWN STONEBURNER
Senior Director
(239) 489-3600
sstoneburner@cpswfl.com